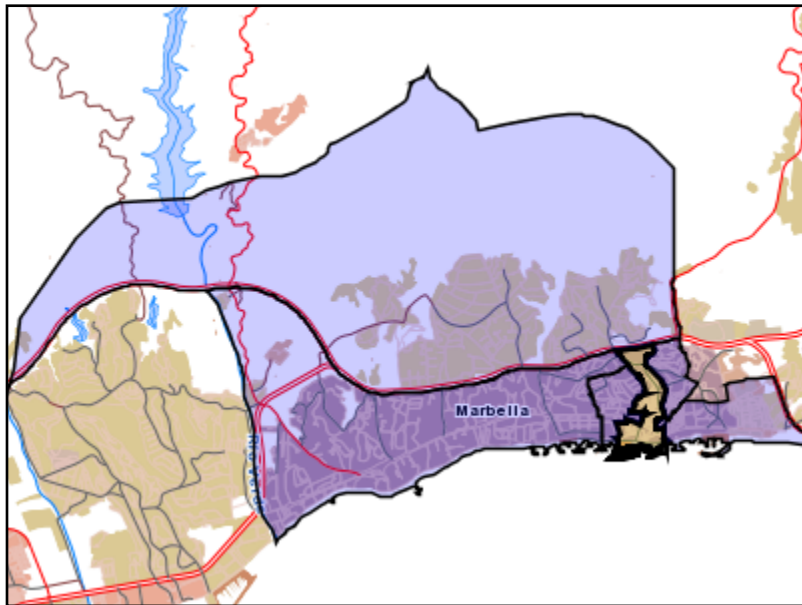


Área de influencia escolar Marbella

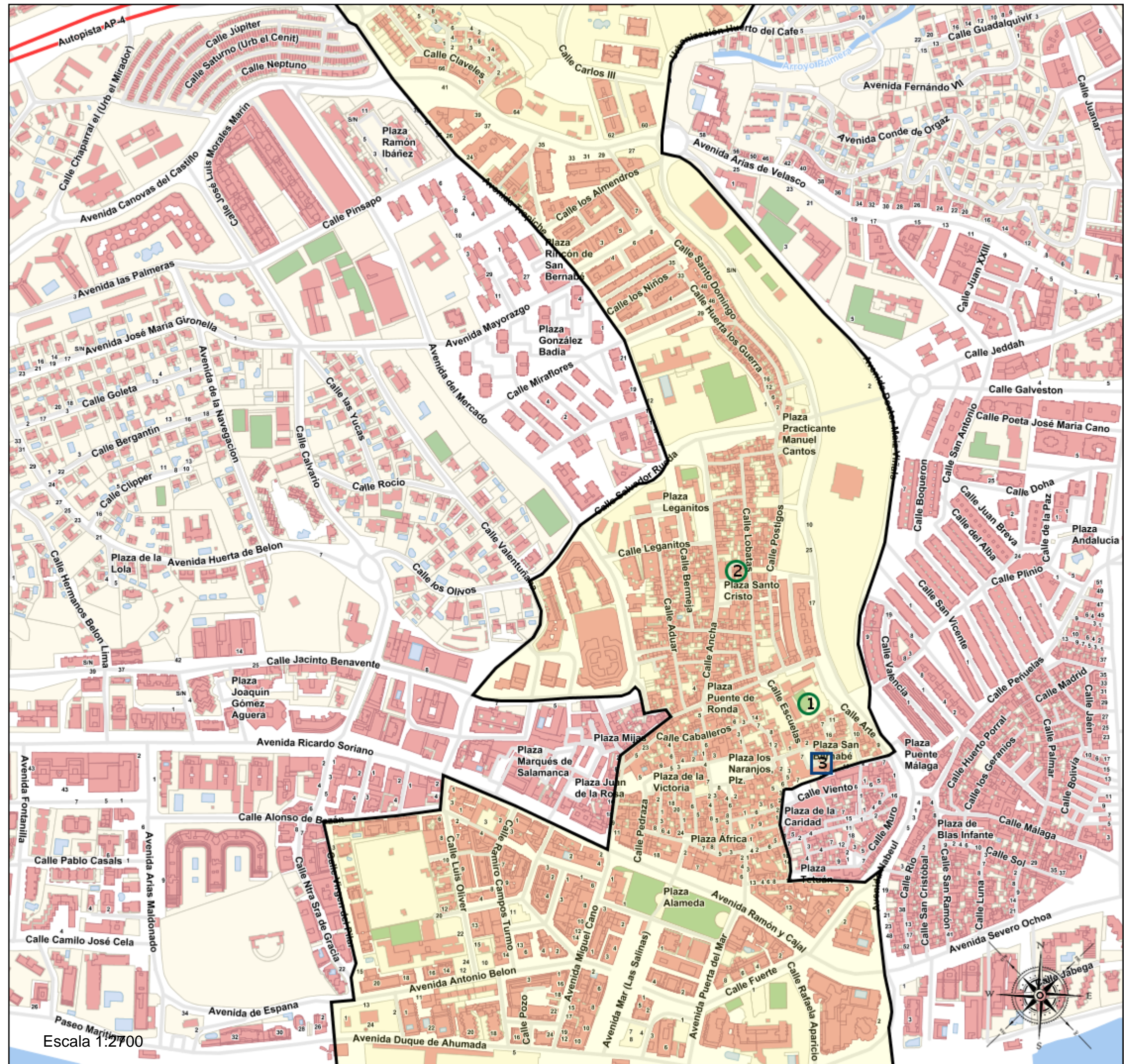
Marbella_I_P_01
29069_01 (Segundo Cic. Infantil/Primaria)

- (1) 29006684 - C.E.I.P. Ntra. Sra. del Carmen
- (2) 29006714 - C.E.I.P. Hermanos Gil Muñiz
- (3) 29006738 - C.D.P. María Auxiliadora I



Leyenda

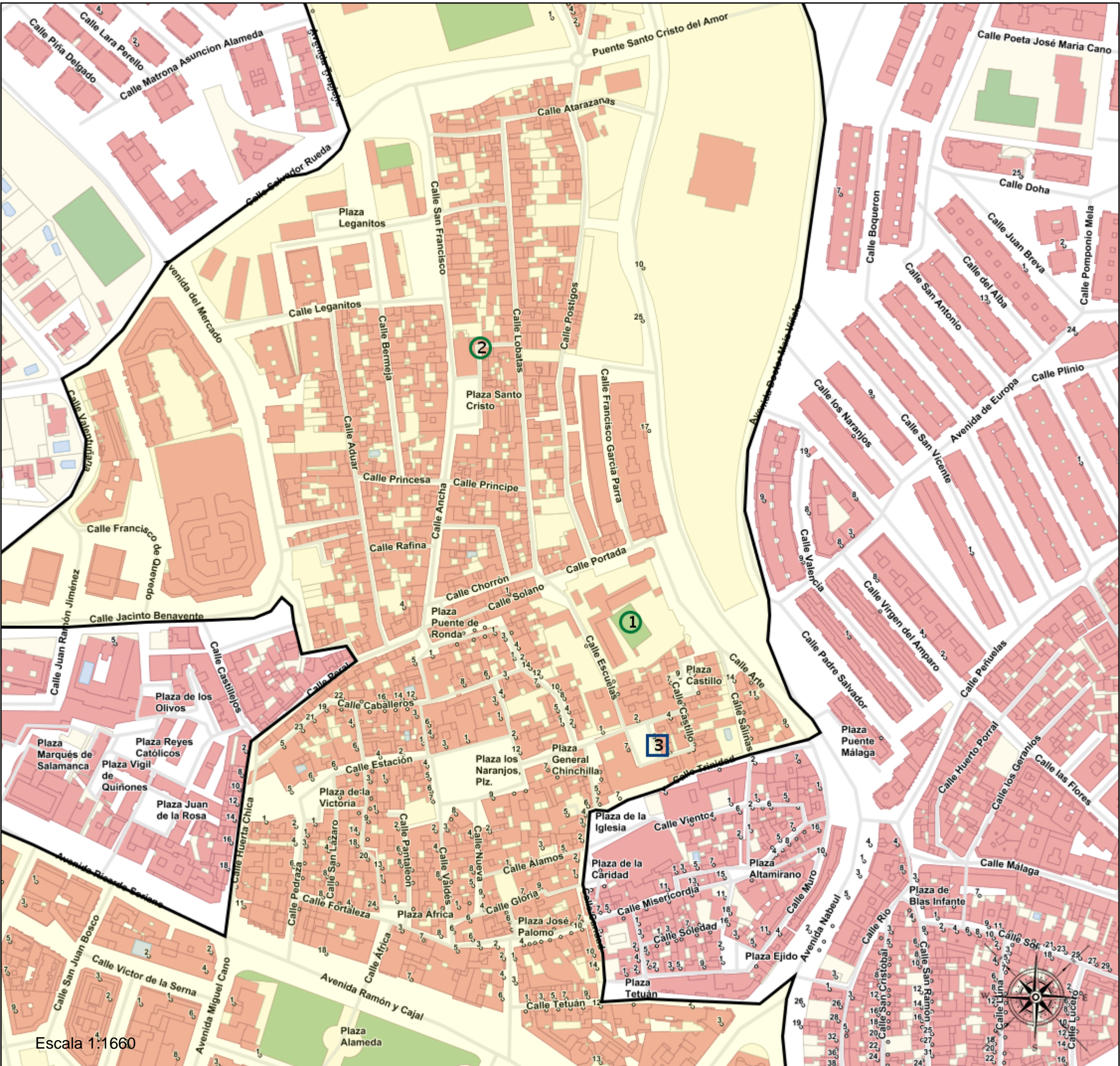
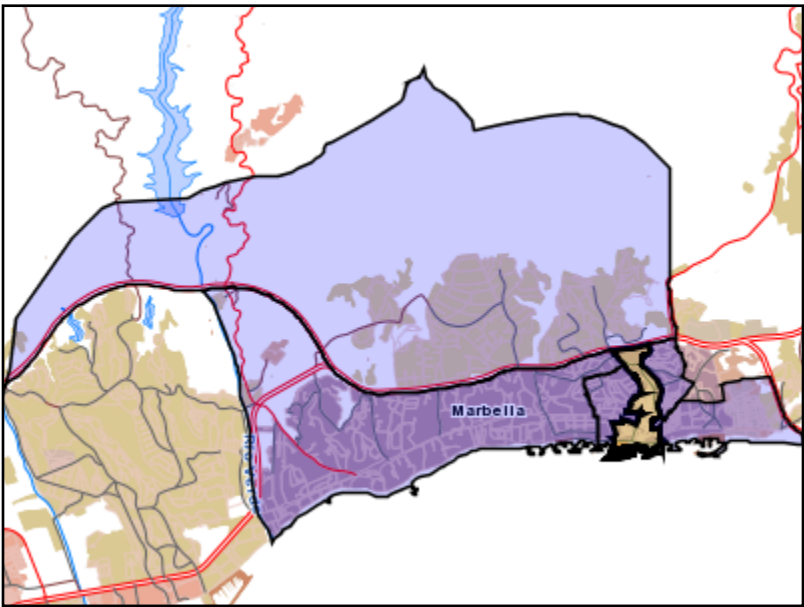
- Centros públicos
- Centros concertados




Área de influencia escolar Marbella

Marbella_I_P_01
29069_01 (Segundo Cic. Infantil/Primaria)

(1) 29006684 - C.E.I.P. Ntra. Sra. del Carmen
(2) 29006714 - C.E.I.P. Hermanos Gil Muñiz
(3) 29006738 - C.D.P. María Auxiliadora I





Junta de Andalucía
Consejería de Educación y Deporte

Leyenda

- Centros públicos
- Centros concertados

Escala 1:1660

